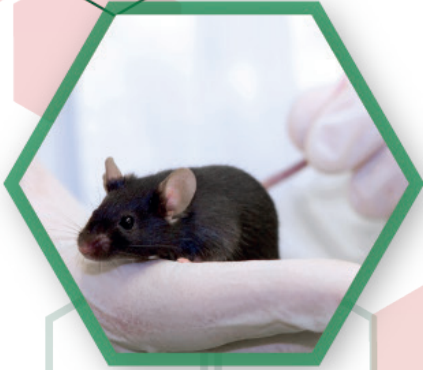
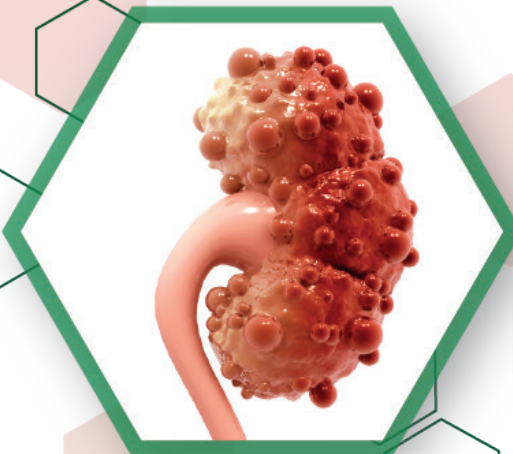


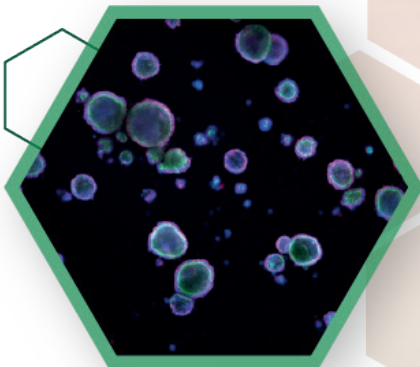
Customized Preclinical Services



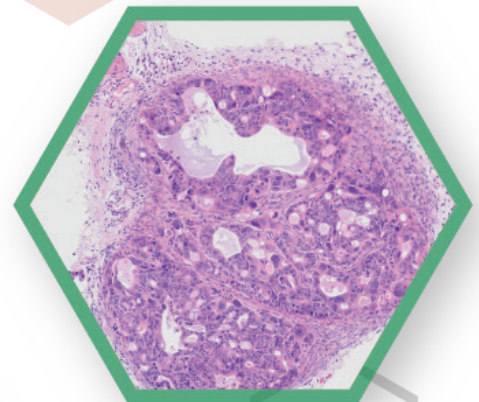
In Vivo Services



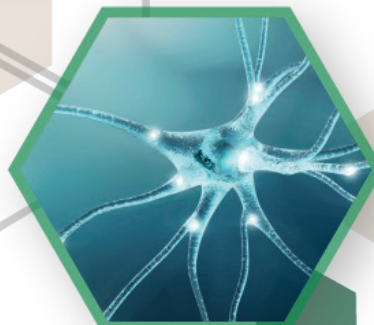
Nephrology



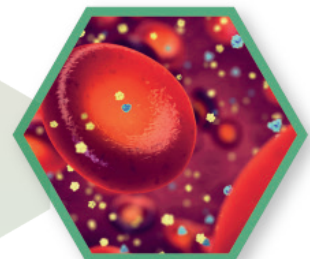
Immuno-Oncology



Pathology



Neurology



Cardio-Metabolic



info@innoserlaboratories.com

www.innoserlaboratories.com

Our Mission

With the highest standards of customer care and flexibility, we support and accelerate preclinical drug development in **oncology, nephrology, cardiometabolic, and neurodegenerative diseases**

by globally supporting scientists, pharmaceutical, and biomedical companies with highly reliable, well-characterized, in vivo and in vitro disease models, big data and state-of-the-art imaging & histopathology services.



Our Pillars

Drug Development		Therapeutic Expertise
<p>Pharmacology and efficacy studies</p> <ul style="list-style-type: none">• PK/PD studies• Optimal dose determination studies• Non-GLP toxicology• Biocompatibility studies• 2D/3D cell culture<ul style="list-style-type: none">- Organoids	<p>Facility management</p> <ul style="list-style-type: none">• Contract breeding• Cryopreservation and rederivation• Cardiac surgery• Stereotactic injection• Implantation of tumors	<p>Nephrology</p> <ul style="list-style-type: none">• Pkd1-cKO mouse model
<p>Customized service</p> <ul style="list-style-type: none">• Medical device testing• Disease model development• Vaccine development	<p>Readouts</p> <ul style="list-style-type: none">• High content imaging• Live cell imaging• Bioluminescence imaging• Ultrasound• Confocal microscopy• Biomarker assays• Flow cytometry	<p>Immuno-oncology</p> <ul style="list-style-type: none">• CDX tumor models• PDX/O platform• Syngeneic tumor models
<p>Digital histopathology</p>		<p>Neurology</p> <ul style="list-style-type: none">• In vitro and ex vivo models• AD mouse models
		<p>Cardio-vascular diseases</p> <ul style="list-style-type: none">• MI model• Ischemic reperfusion model• Transversal aortic constriction• Osmotic angiotensin II• HFpEF model
		<p>Cardio-metabolic diseases</p> <ul style="list-style-type: none">• NASH model

Get in touch

info@innoserlaboratories.com

